



**M**

**COMPANY  
PROFILE**

**E**

**T**

**S**

**ENERGY**  
SINCE 1987



**INNOVATING POWER  
SINCE 1987**

# ABOUT US

## We Are

Power solution providers, delivering the highest quality of service in both diesel generators and renewable energy solutions. We offer efficient engineering, high-quality products, and 24/7 support to ensure uninterrupted power supply to our customers.

Understanding the need for reliable power supply in various sectors, we deliver power solutions to 42 countries worldwide, over three decades.





**Our diesel generators are designed to meet diverse needs, ensuring maximum efficiency and cost-effectiveness.**

Our expertise in efficient engineering ensures that our products are durable, reliable, and easy to maintain. We use the highest quality materials and cutting-edge technology to manufacture our products, ensuring that they are up to international standards.

# OUR STORY

BEGINS IN 1987,  
AS A MAINTENANCE  
SERVICE PROVIDER

Being the manufacturers and resellers of diesel generators in the Lebanese market, with three decades of experience under our belt, we have grown into a dominant power solutions provider.

Initially specializing in diesel generators, we expanded our portfolio with the addition of renewable energy solutions such as hydro, hybrid, and solar energy. We continued to provide our services to clients in over 40 countries, cultivating strength and trust with both suppliers and clients.







**In 1997, we became a diesel generator set assembler and power solutions provider, with a focus on servicing diesel generator sets.**

We were the first Lebanese assembler to be certified with ISO9001 in 1997, further establishing ourselves as a quality product provider in the regional telecom market, with future aim to enter the European market.

With the launch of the Powermet Network in 2011, we further strengthened our operation by providing on-the-ground support to clients and markets.

At METS Energy, we constantly conduct our business with the highest standards of quality, ethics, and integrity, while ensuring continuous development in our technology and human resources.





## OUR CORE VALUES

- Honesty
- Excellence
- Innovation
- Teamwork
- Social Responsibility
- Commitment and Reliability

### We believe ---

In the foundation of **dedication, honesty, and excellence.** Our commitment to these values has enabled us to grow and thrive since our establishment. Transparency is at the core of all our dealings, as we value personal excellence and strive for continual self-improvement to ensure that we are always delivering the best possible service to our customers.





## OUR GOAL

**As a pioneering corporation, we work to empower communities across the Middle East, Africa, and Asia with sustainable and reliable energy solutions, driving positive change for future generations.**

We are committed to delivering innovative and reliable products and services, that cater to your environment's unique and diverse needs.





## VISIT METS

METS Energy is spread over 13,000sqm within Bchamoun, Lebanon, home to our factory houses, our local and international production lines, as well as the offices of METS Holding. We're constantly growing to meet the demand for conventional, sustainable and renewable energy solutions.

**Which is why, we're excited to announce a 30,000sqm expansion of our headquarters and factory in Bchamoun, currently under development and construction. Our commitment to reliable and renewable energy solutions drives us to push the boundaries of what's possible, continuously providing top quality products and services.**



# GENERATORS, PRODUCTS & SOLUTIONS

**At METS Energy, we provide both conventional and alternative energy solutions, through both diesel generators and renewable energy services.**

For a better understanding of what we offer, take a deeper dive into the various standard and renewable energy services.

## Products

- Engines and alternators
- Generators (Critical, Prime, and standby power)
- Sound proof canopies
- Fuel systems and accesories
- Exhaust systems and enviromental filters
- Load banks
- Solar Panels
- Spare parts
- Synchronization Systems
- Electrical Panels
- Electric power products Etc.

## Solutions

- Diesel
- Solar
- Hybrid
- Hydro



# DIESEL ENERGY

A reliable and efficient source of power, particularly in areas where access to the electrical grid may be limited or unreliable. Diesel generators can be used as a primary or backup source of power, and can be designed to meet the specific energy needs of a home or business.

## Benefits include

- Providing on demand power
- Providing a reliable and efficient source of power in areas without access to the electrical grid
- Offering a cost-effective and customizable solution for meeting energy needs
- Can be used in a variety of applications, from residential to industrial settings



# MORE ON DIESEL GENERATORS

Diesel generators are complex machines made up of various components. We understand that each component plays a crucial role in the generator's overall performance and reliability. That's why we only use high-quality components in our generators and ensure that each one is installed and maintained to the highest standards.

Generator sets range from 5 kVA - 4000 kVA, and with synchronization power plants up to 400 MW.

 Perkins

CUMMINS

VOLVO  
PENTA

DOOSAN

  
VM MOTORI

  
FPT

  
DEUTZ

 Baudouin

Kubota

YANMAR

  
LISTER  
PETTER

MWM  
INTERNATIONAL

STAMFORD

  
LEROY  
SOMER

  
meccalte

  
WEG





# SOLAR ENERGY

A clean and renewable source of energy that harnesses the power of the sun to generate electricity. Solar panels can be installed on homes and businesses, allowing them to generate their own electricity and reduce their dependence on fossil fuels.

## Benefits include

- Reducing electricity bills by generating your own power
- Contributing to a cleaner and greener environment
- Increasing the value of your property by investing in renewable energy
- Providing a reliable and long-lasting source of energy
- with minimal maintenance

**ELUM**  
ENERGY

  
victron energy

 felicitysolar

 Deye

 HUAWEI

 Trina solar

 Jinko Solar

 RECOM  
TECHNOLOGIES

 LONGI Solar

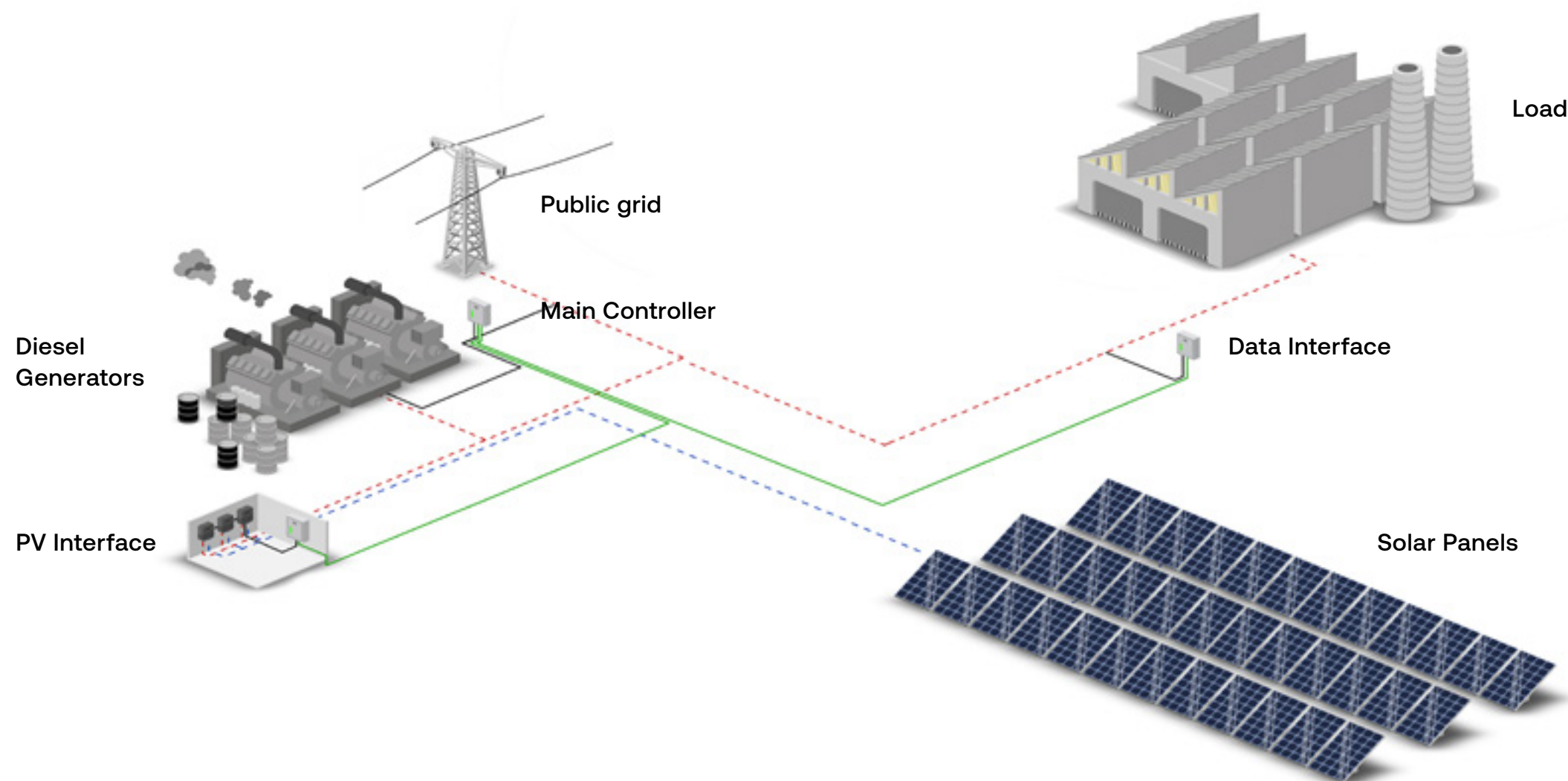


# HYBRID ENERGY

Combining multiple sources of energy, such as solar and diesel or wind and hydro, to provide a more reliable and efficient source of power. Hybrid systems can be designed to meet the specific energy needs of a home or business, making them a versatile and adaptable solution.

## Benefits include

- Reducing environmental impact
- Reducing costs and dependence on fossil fuels
- Providing a more reliable source of power by combining different energy sources
- Allowing for greater flexibility and customization in meeting energy needs



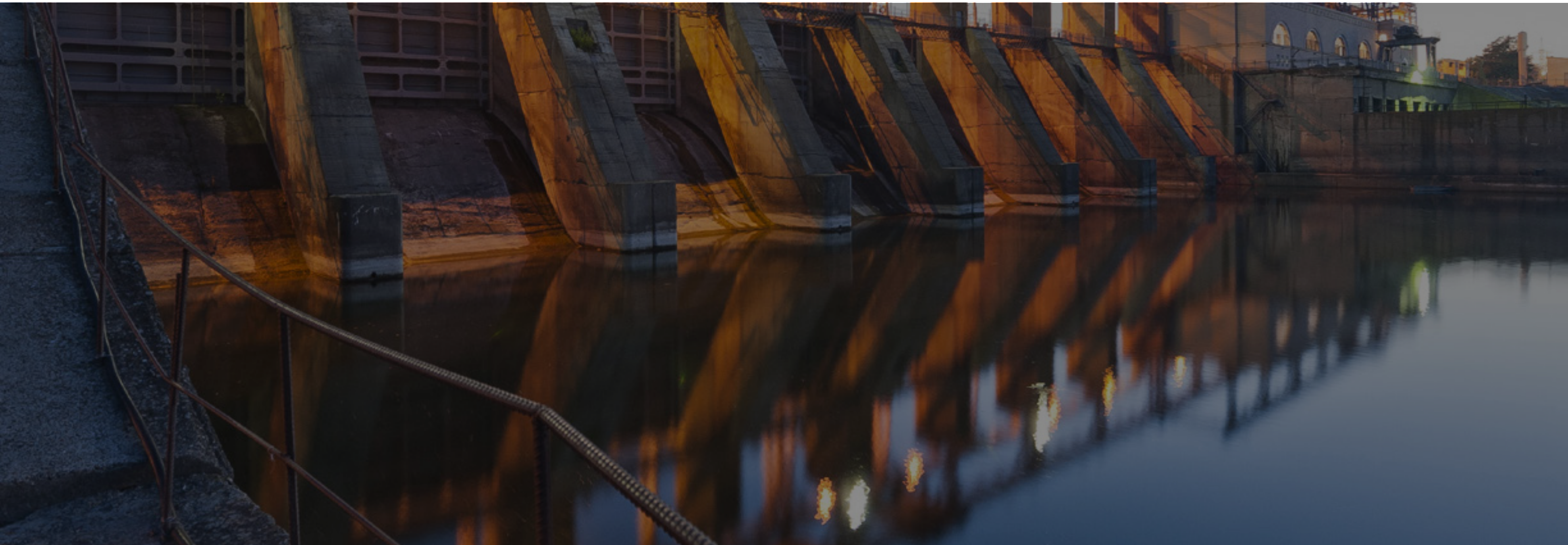


# HYDRO ENERGY

Also known as hydropower, harnesses the energy of moving water to generate electricity. Hydro systems can be designed for large-scale energy production, such as hydroelectric dams, or for small-scale energy production, such as micro hydro systems.

## Benefits include

- Offering a cost-effective and efficient solution for generating electricity
- Reducing dependence on fossil fuels and contributing to a cleaner environment
- Providing a reliable and consistent source of energy with minimal maintenance
- Providing opportunities for community-based energy production and economic development in rural areas.





# SERVICES

- Value Engineering
- Rental Power
- After Sales
- 24/7 Maintenance
- Installation & Conditioning





# VALUE ENGINEERING

**We analyze and improve the design and construction of the components used in all our machines, optimizing performance, while finding the most effective materials and techniques, without compromising the quality and efficiency of any system.**

In solar and hybrid technology, we factors such as; the type and quality of solar panels, inverters, and batteries, as well as the wiring, mounting, and monitoring systems used.

We aim to provide the optimal balance between cost, performance, and reliability of the solar and hybrid systems, delivering value over anything else, ensuring that the system meets your energy needs in a sustainable and efficient manner.





## INSTALLATION & COMMISSIONING

**Our team of experts offers comprehensive solutions that encompass every step of the installation process of generators at their final destination.**

We bring together a range of diverse disciplines to ensure that every aspect, from safety standards to electrical connections, is carefully considered and executed.





## AFTER SALES

**We prioritize the ongoing education and training of our technical team, ensuring that they remain up to date with the latest on renewable energy practices and industry developments.**

Our experienced technicians, engineers, and senior managers are dedicated to providing exceptional after-sales services to our clients. We offer customized maintenance contracts to meet each customer's unique needs. Rest assured that with METS Energy, you'll receive top-notch service and support, 24/7.





## RENTAL POWER

We know that power is essential for businesses and homes alike. That's why we offer flexible, reliable, and dynamic services. Whether you need prime or backup power, standby or peaking power, for short or long-term rental applications, we've got you covered. Our fleet of reliable, silent generators come with customized configurations, making installation easy and hassle-free.

**We offer 24/7 local support, both for maintenance and after sales, so you can trust that we'll be there for you whenever and wherever you need us. We currently offer rental services of hybrid, solar and diesel generators, to Lebanon.**





## 24/7 MAINTENANCE

We pride ourselves on providing high-quality products that are built to last, and we stand behind our products with after-sales services that are second to none.

**Our team of experts provided by POWER SERVICES, are available 24/7, ensuring peace of mind knowing that your needs are being taken care of. Our technical teams and maintenance units have everything they need to get the job done right.**

Using a Reliability Centered Maintenance approach to equipment maintenance, we focus on preventing faults and failures before they happen.

Our maintenance divisions are highly skilled, using statistics to reduce the chances of any problems. We plan maintenance activities for each machine, so they operate in the most reliable and cost-efficient way possible. Trust us to keep your renewable energy systems running smoothly and efficiently, so you can focus on what you do best.





## MAINTENANCE DIVISIONS

### **Preventive Maintenance (PM)**

Time Based Maintenance, represents a shift away from unplanned to planned maintenance activities. Periodic inspection and maintenance are scheduled at prescribed intervals in an attempt to reduce or eliminate equipment failures.

### **Predictive Maintenance (PdM)**

Condition Based maintenance - predictive maintenance (PdM) replaces the arbitrary time intervals with maintenance scheduled only when the condition of the equipment warrants it.

### **Corrective Maintenance (CM)**

Crisis management and run to failure action.





**INNOVATING POWER  
SINCE 1987**





# GET IN TOUCH

**METS ENERGY SAL, CHOUEIFAT, BCHAMOUN  
CROSS ROAD BEIRUT, LEBANON  
P.O.BOX: 113/7354  
T +961 25 801 401  
M+961 70 801401  
WWW.METSENERGY.COM**

**[info@metseenergy.com](mailto:info@metseenergy.com)**

**[@metseenergy](#)**